



CHRIS CHRISTIE
Governor

KIM GUADAGNO
Lt. Governor

New Jersey Office of the Attorney General

Division of Consumer Affairs
Office of the Director
124 Halsey Street, 7th Floor, Newark NJ 07102-3017



CHRISTOPHER S. PORRINO
Attorney General

SHARON M. JOYCE
Acting Director

September 6, 2017

Mailing Address:
P.O. Box 45027
Newark, NJ 07101
(973) 504-6534

Mayor Stuart K. Patrick
Glen Ridge Borough
825 Bloomfield Avenue
Glen Ridge, NJ 07028

Suspected Elder Abuse? Our Safe Care Cam Program Can Help

Dear Mayor Patrick:

One of my priorities as Attorney General has been to protect our most vulnerable citizens from abuse and neglect, including New Jersey's senior and disabled populations. In our state and nationwide, the growth of the senior population has led to a significant increase in the demand for both in-home and institutional care. Although the vast majority of caregivers serve their senior patients well, others violate the trust of their patients and subject them to abuse or neglect. In fact, there have been a number of recent cases within our office involving caregivers caught on hidden cameras physically or verbally abusing their elderly or disabled patients.

In order to detect (and deter) such mistreatment and/or theft, the Office of the Attorney General and the Division of Consumer Affairs created the "Safe Care Cam" program to protect elderly and disabled New Jerseyans. The program is simple: If a caregiver is suspected of engaging in misconduct, we will loan a hidden micro-camera, free of charge, for the purpose of assuring that the caregiver is acting appropriately when he or she thinks no one is watching. The footage captured by the hidden device will either provide families with peace of mind that their loved ones are being cared for properly, or provide proof that immediate protective intervention or criminal prosecution is necessary. Originally launched exclusively for use in private homes, in April 2017, the Safe Care Cam program was expanded to allow families to monitor the treatment of patients residing in nursing homes and other institutional care facilities under certain conditions.

By ensuring that all New Jersey residents, regardless of their income, have access to the state-of-the-art technology needed to watch over their loved ones, the Safe Care Cam program is helping to ensure the safety of elderly and disabled patients wherever they are receiving residential care. As an elected leader who represents members of the elderly community, I encourage you to advise your constituents of this program in the event they raise concerns about a caregiver. Thank you very much for your assistance with this important endeavor.

Sincerely,

Christopher S. Porrino
Attorney General



Via fax and overnight mail

August 23, 2017

Hon. Stuart K. Patrick and
Members of the Governing Body
Borough of Glen Ridge
825 Bloomfield Avenue
Glen Ridge, NJ 07028

Dear Mayor Patrick and Members of the Governing Body:

Effective September 23, 2017 franchise fees for all our subscribers in Glen Ridge will increase from 2% of basic charges to 4% of all video related charges on customer bills as mandated by the system-wide franchise law that has been enacted in NJ.

Customers are being notified of this change via the following message that will appear on customer bills on their next billing statements in the September 22 billing cycles.

"As mandated by the New Jersey Legislature under the State-wide cable franchising law, effective with your current billing statement, the franchise fees for the cable television portion of your cable bill will increase from 2% to 4%. Additionally, this increased franchise fee percentage will be applied to all video related services, installation and equipment charges. Please note that these fees, as directed by New Jersey State Statute, are remitted to your local municipal government for use in your town."

If you have any question regarding this change in franchise fees, please feel free to contact me at 908 258-8143.

Sincerely,

A handwritten signature in black ink, appearing to read "Charles L. Smith III", is written over a horizontal line.

Charles L. Smith III
Senior Director, Government and Regulatory Affairs

SAFE CARE CAM

PROTECT YOUR LOVED ONES RECEIVING CARE

Safe Care Cam is a new program designed for those New Jersey residents who suspect their loved ones are being abused, mistreated, or neglected by a health care provider. The program allows access to micro-surveillance cameras that can be easily hidden to detect abuse and protect patients. The **Safe Care Cam** program makes these cameras available for free for 30-days loans. To participate on the program, please follow these simple steps:

1. Call the N.J. Division of Consumer Affairs at **973-504-6375** or **800-242-5846**. Follow voice prompts to a **Safe Care Cam** program voicemail box and leave a message with your name and contact information.
2. A staff member will contact anyone who leaves a voicemail with further information about the program and to schedule an appointment to pick-up a camera.

At this appointment, the program participant will be required to do the following:

- Provide a copy of a driver's license or other official identification.
- Provide contact information, including phone number, cell phone number, and addresses.
- Sign a program contract, which sets forth rules and obligations under the **Safe Care Cam** program.

Also at this time, a staff member will provide the program participant with a camera and a memory card. A brief training will be provided on how the camera works and how the footage can be recorded, viewed, and saved.

Upon request, the camera and memory card loan can be extended for more than 30 days.

Made possible by the following:
NJ Office of the Attorney General
Division of Consumer Affairs



NJConsumerAffairs.gov

**Wright & Robinson
Architects**

63 Adams Place
Glen Ridge, NJ
07028-2041

tel 973 / 566-0449

Mark Wright, AIA
Karin Robinson

20 September 2017

Mr. Michael J. Rohal
Glen Ridge Borough Administrator
825 Boomfield Avenue
Glen Ridge NJ 07028

re: Glen Ridge Community Pool House

Dear Mr. Rohal,

We thought you would be pleased to hear that the Glen Ridge Community Pool House has been recognized with a Silver Medal design award by the American Institute of Architects Newark & Suburban chapter (AIA N&S).

We enclose a small print of the 40" square presentation panel for your information.

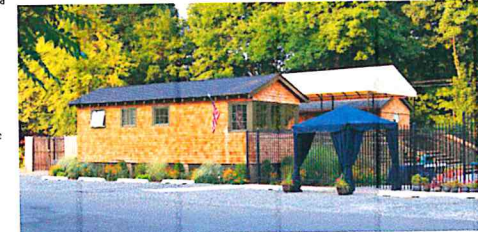
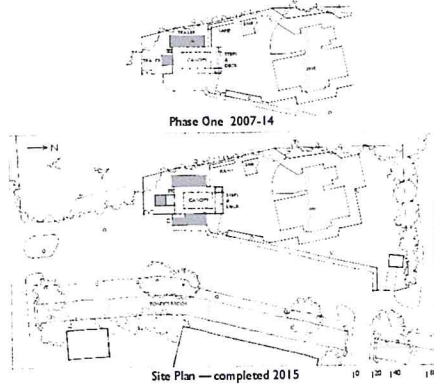
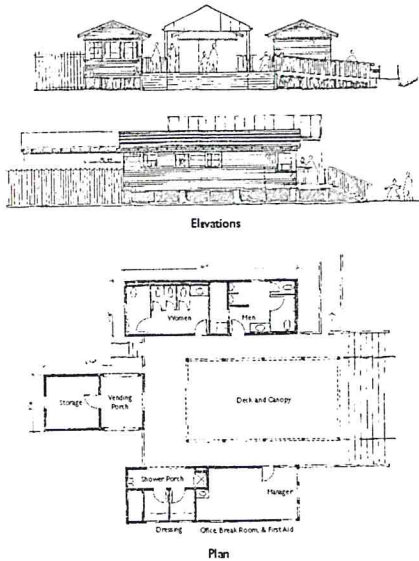
Karin and I are exceedingly proud of the project, and were pleased this summer to see it holding up so well under the barefoot assaults of so many happy kids and parents! It was well built, and is being well cared for by the club management and staff. You and the entire Borough team—and this is going all the way back now to 2005—brought out the best in us.

Sincerely,



Mark Wright

cc: Mike Zichelli, Jodie Schnack



The Glen Ridge Community Pool Club was built by the Borough—a design by others—in the narrow foot-candle between Toney's Brook and the wooded embankment of a NJ Transit rail right-of-way. The NJ DEP allowed construction of the pool itself but rejected the clubhouse as a flood obstruction. The club opened in 2005 with temporary toilet rooms in a large trailer and storage trailers in a smaller one. The Borough engages us to entirely rethink the clubhouse design, while retaining the pool and its civil and swimming-related amenities but to be ready in place.

Additionally, the new clubhouse were subject to review by the Glen Ridge Historic District Preservation Commission.

We proposed a new clubhouse to be built out over a period of years in a phased master plan. All structures would need to be raised above flood elevation set by the DEP, and be built on piers and with open stairways to permit water to move with minimal impediment.

Phase 1—Build a covered deck with an ADA compliant ramp, and board steeple accents to match the ones in front of the Metropolitan Museum in New York City. The fabric canopy structure would provide sun shelter and a visible, aerial look to mark the club area more as a club. The painted-wood railings were to be classic, rather than domestic, in scale. Phase 1 would also incorporate useful life of the trailers, but do so in the context of an upgraded facility that could attract and retain new member families.

Phase 2—Build a manager office with proper oversight of the grounds, a ball break room and fire aid area, changing rooms, and an accessible shower.

Phase 3&4—Replace the two trailers as funds permit and as they reach the end of their useful life.

The club proceeded with a highly stable membership, allowing phases 2, 3, and 4 to be needed in one building campaign.

The new buildings are structurally simple and very carefully detailed so that they could be built handily and cheaply by the contractors whom it is expected to prevail in open public bidding. They are one built wood frame on concrete masonry piers. Primary materials are cedar, engineered to weather, a mix of painted wood and cementitious trim-painted wood windows, asphalt roof and copper gutters and flashings. The central event space is built with composite decking, painted steel canopy structure and panels, and vinyl fabric. The space is shown in a sheltered corner of a screened porch with wall clad masonry surface panels. The cedar shingles are primarily gabled for a long service life without stain or paint, and will be left weather naturally under the protection of a weather rafter tails. We and the owners inspect and intend that the shingles will take on a hand-painted appearance as cedar buildings in wooded settings on the eastern seaboard naturally do.

The winning contractor was a pleasure to work with and did a beautiful job on time and within budget.

The club now feels like a park, rather than like a parking lot.

Timeline

- 2005 Club opened with temporary facilities
- 2006-07 Design and writing drawings for Phase 1
- 2007 Phase 1 construction, complete 20 Apr 2007
- 2011 Minor design revisions and working drawings
- 2014-15 Build out construction, complete 20 Apr 2015

Photos 2,3,4,5 Copyright 2015 by Scott Kennedy, Studio D12
Photos 1,6,7,8,9,10 by the architects

Glen Ridge Community Pool House — Glen Ridge NJ — Wright & Robinson Architects