



95 WASHINGTON STREET, MORRISTOWN, NJ 07960  
t. 973.539.5353 f. 973.539.0916  
THE WOOLWORTH BUILDING  
233 BROADWAY SUITE 2150, NEW YORK, NY 10279  
t. 212.982.7900 f. 212.982.8111  
www.nkarchitects.com

ALLEN R. KOPELSON, AIA AI 05644  
BEN P. LEE, AIA AI 07017  
STEPHEN P. ALUOTTO, AIA AI 09269  
PAUL J. DRAGO, AIA AI 17503  
WALTER J. KNEIS, AIA AI 10867  
DANIEL J. TOPPING, AIA AI 16263

*Allen R. Kopelson*  
THIS DOCUMENT IS THE EXCLUSIVE PROPERTY OF  
NADASKAY KOPELSON ARCHITECTS. THE DOCUMENT AND  
THE INFORMATION IT CONTAINS MAY NOT BE REPRODUCED  
OR USED FOR OTHER THAN THE SPECIFIC PROJECT FOR  
WHICH IT WAS PREPARED WITHOUT THE EXPLICIT CONSENT  
OF NADASKAY KOPELSON ARCHITECTS.

## PRELILMINARY & FINAL MAJOR SITE PLAN FOR ONE BAY URBAN RENEWAL LLC.

PROPOSED MEDICAL OFFICE  
BUILDING

BLOCK 4215, LOT1, TOWNSHIP OF MONTCLAIR  
AND  
BLOCK 106, LOT 15, BOROUGH OF GLEN RIDGE,  
ESSEX COUNTY, NEW JERSEY

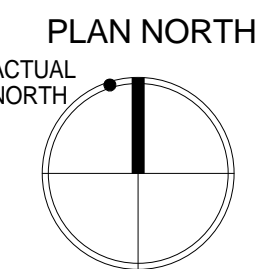
2 PLANNING BOARD SUBMISSION 01-31-18  
1 HISTORICAL PRESERVATION COMMITTEE REVIEW 10-19-17

NO. DESCRIPTION DATE

DRAWING TITLE

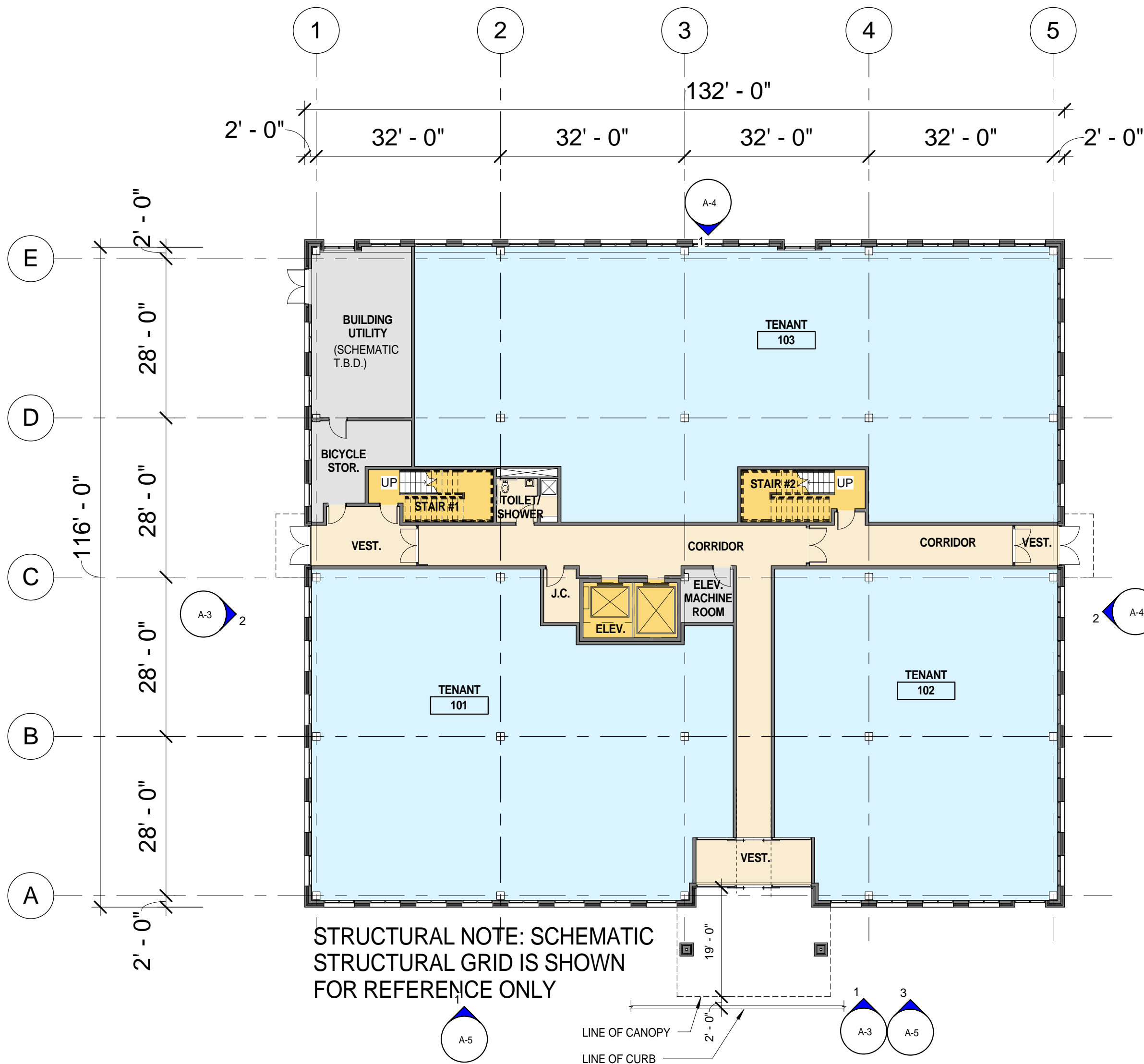
FIRST & SECOND FLOOR  
PLANS

DATE  
SCALE  
1/16" = 1'-0"  
DRAWN  
MM  
CHECKED  
AK  
DRAWING NUMBER



A-1

NK PROJECT NUMBER: 2133.000

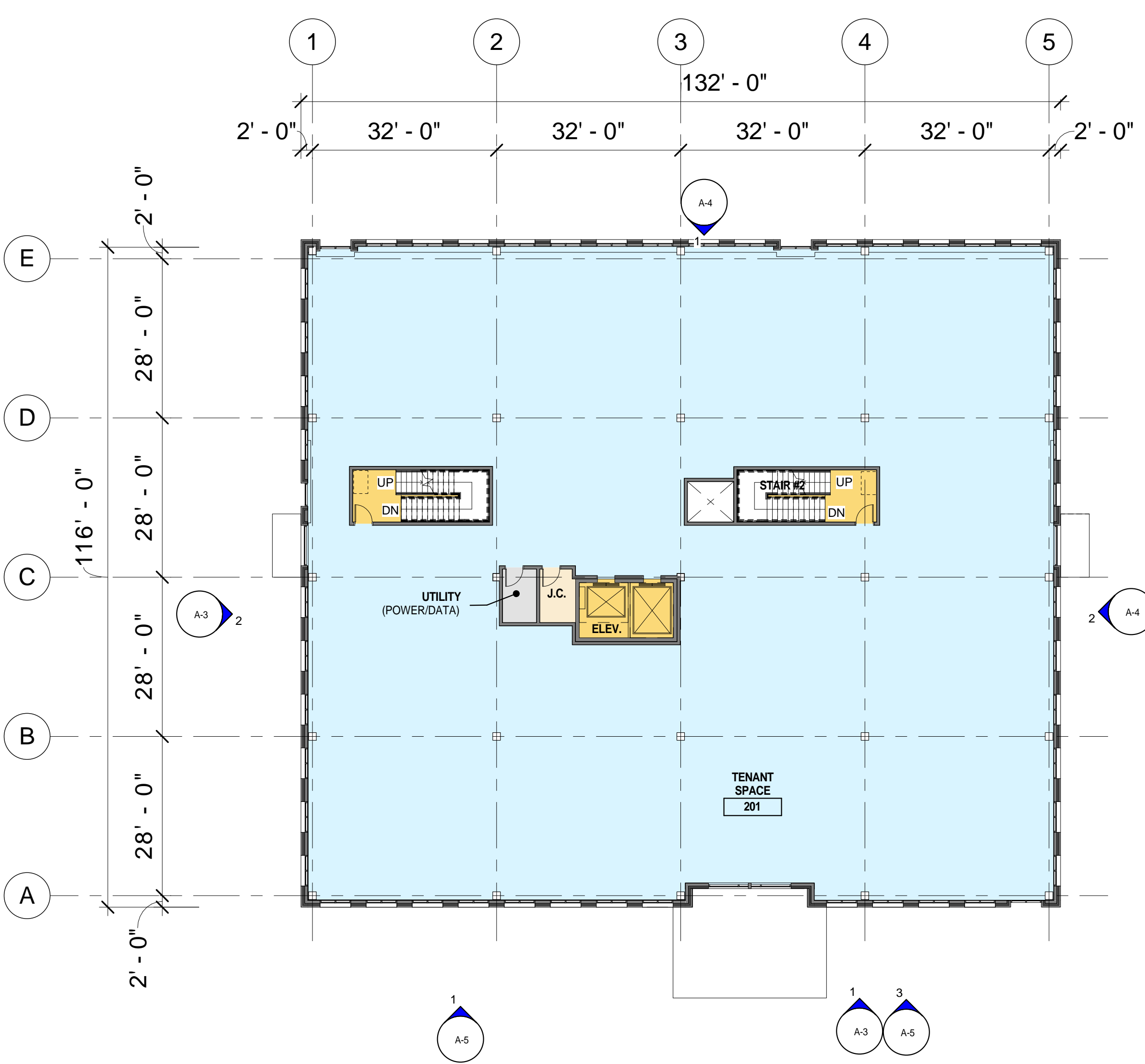


1 FIRST FLOOR PLAN  
1/16" = 1'-0"

15,245 GROSS SQ. FT.

### PROGRAM LEGEND

- CORE
- CIRCULATION
- VERTICAL CIRCULATION
- TENANT SPACE

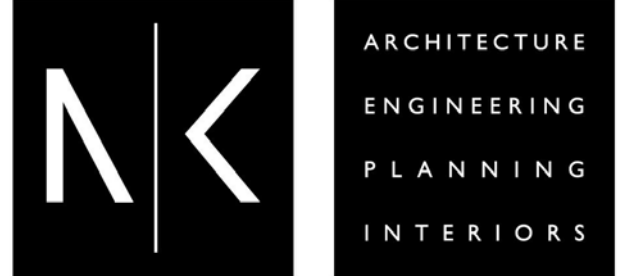


2 SECOND FLOOR PLAN  
1/16" = 1'-0"

15,245 GROSS SQ. FT.

	GROSS AREA (OUTSIDE WALL)
FIRST FLOOR	15,245 SF
SECOND FLOOR	15,245 SF
THIRD FLOOR	15,245 SF
TOTAL	45,735 SF

NOTE: DRAWINGS AT SCALE WHEN PRINTED AT 24" x 36"



95 WASHINGTON STREET, MORRISTOWN, NJ 07960  
t. 973.539.5353 f. 973.539.0916  
THE WOOLWORTH BUILDING  
233 BROADWAY SUITE 2150, NEW YORK, NY 10279  
t. 212.982.7900 f. 212.982.8111  
www.nkarchitects.com

ALLEN R. KOPELSON, AIA AI 05644  
BEN P. LEE, AIA AI 07017  
STEPHEN P. ALUOTTO, AIA AI 09269  
PAUL J. DRAGO, AIA AI 17503  
WALTER J. KNEIS, AIA AI 10867  
DANIEL J. TOPPING, AIA AI 16263

*Allen R. Kopelson*

THIS DOCUMENT IS THE EXCLUSIVE PROPERTY OF  
NADASKAY KOPELSON ARCHITECTS. THE DOCUMENT AND  
THE INFORMATION IT CONTAINS MAY NOT BE REPRODUCED  
OR USED FOR OTHER THAN THE SPECIFIC PROJECT FOR  
WHICH IT WAS PREPARED WITHOUT THE EXPLICIT CONSENT  
OF NADASKAY KOPELSON ARCHITECTS.

## PRELILMINARY & FINAL MAJOR SITE PLAN FOR ONE BAY URBAN RENEWAL LLC.

PROPOSED MEDICAL OFFICE  
BUILDING

BLOCK 4215, LOT1, TOWNSHIP OF MONTCLAIR  
AND  
BLOCK 106, LOT 15, BOROUGH OF GLEN RIDGE,  
ESSEX COUNTY, NEW JERSEY

2	PLANNING BOARD SUBMISSION	1-31-18
1	HISTORICAL PRESERVATION COMMITTEE REVIEW	10-19-17

NO.	DESCRIPTION	DATE
-----	-------------	------

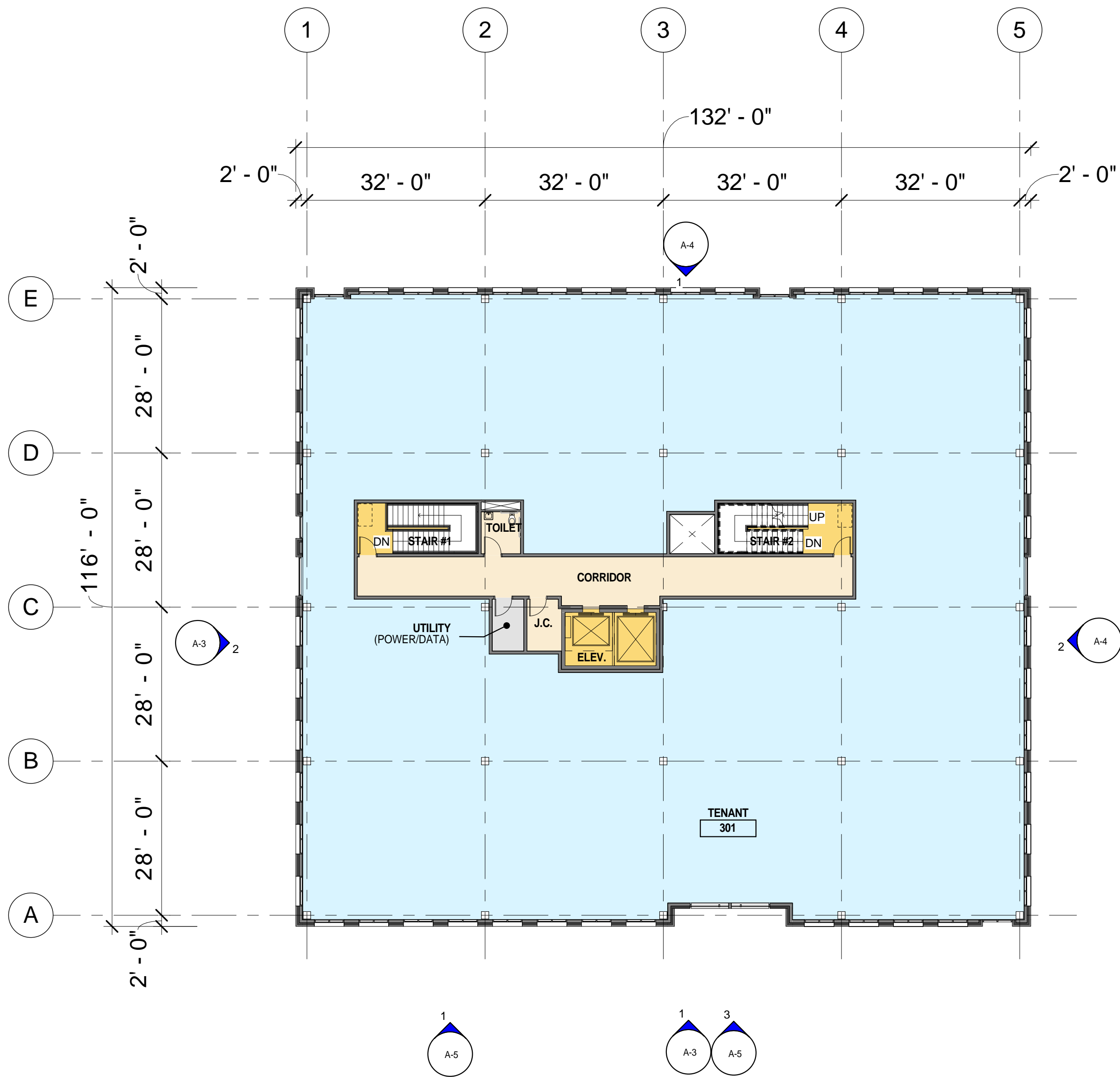
DRAWING TITLE  
**THIRD FLOOR & ROOF  
PLAN**

DATE  
-  
SCALE  
1/16" = 1'-0"  
DRAWN  
MM  
CHECKED  
AK  
DRAWING NUMBER

PLAN NORTH  
ACTUAL  
NORTH

# A-2

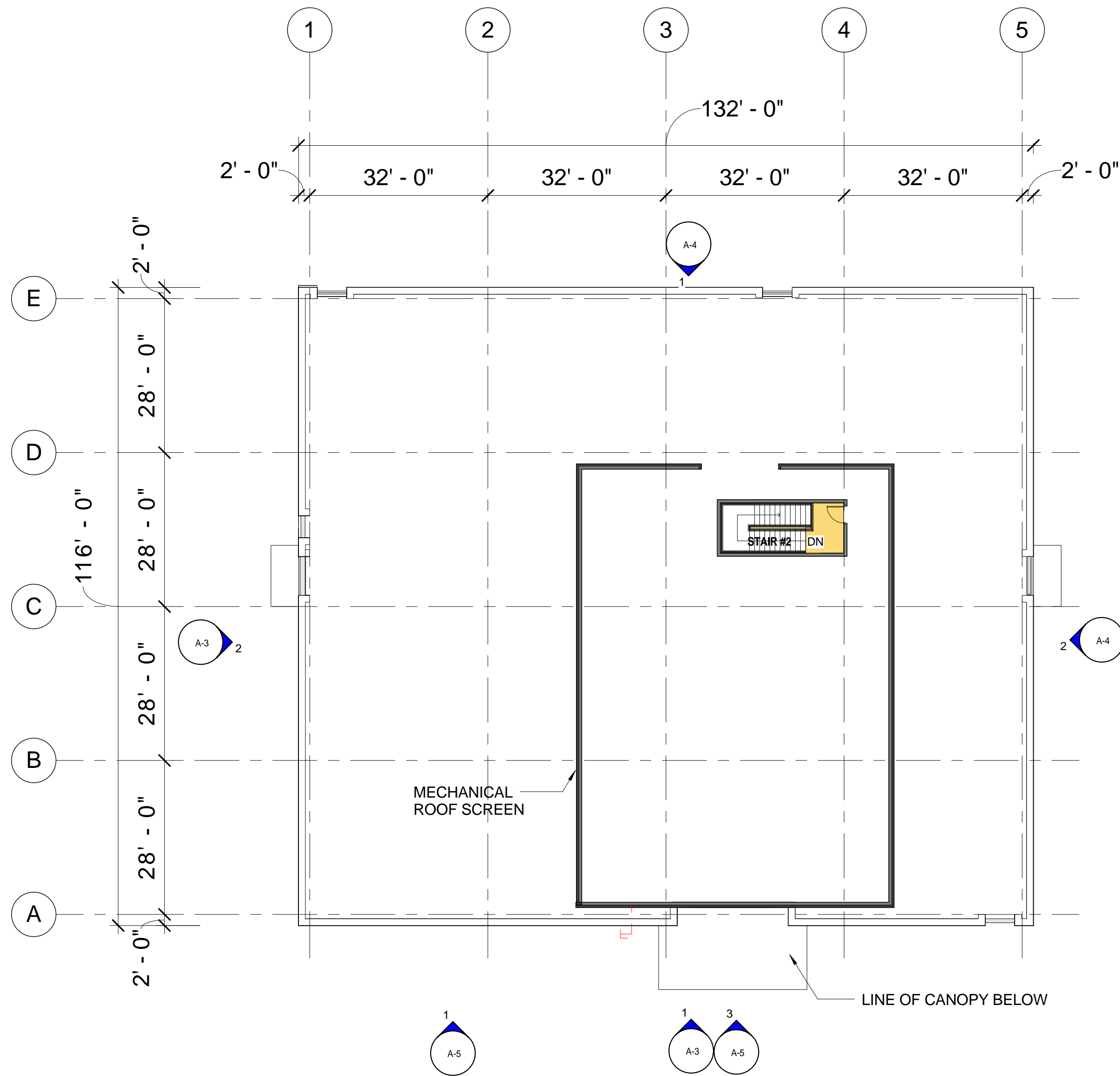
NK PROJECT NUMBER: 2133.000



1 THIRD FLOOR PLAN  
1/16" = 1'-0" 15,245 GROSS SQ. FT.

### PROGRAM LEGEND

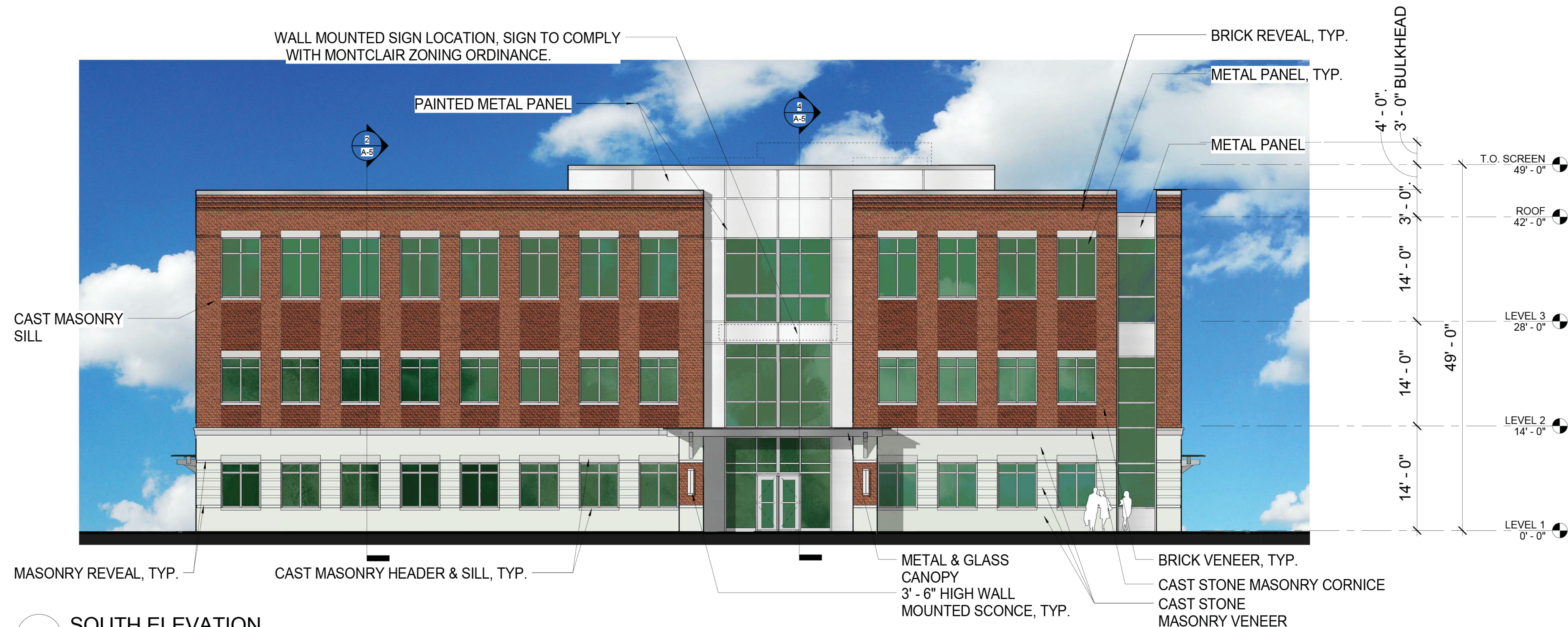
- CORE
- CIRCULATION
- VERTICAL CIRCULATION
- TENANT SPACE



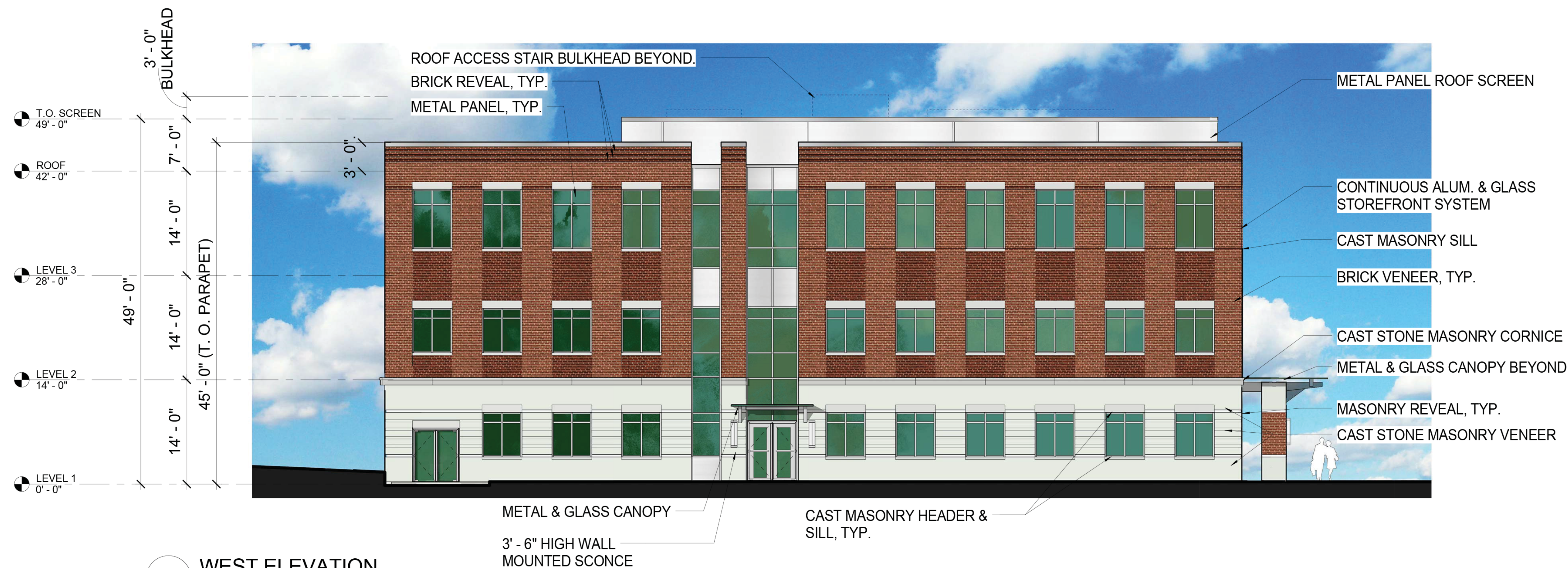
2 ROOF PLAN  
1/16" = 1'-0"

NOTE: DRAWINGS AT SCALE WHEN PRINTED AT 24" x 36"





1 SOUTH ELEVATION  
1/8" = 1'-0"



2 WEST ELEVATION  
1/8" = 1'-0"

ARCHITECTS



95 WASHINGTON STREET, MORRISTOWN, NJ 07960  
t. 973.539.5353 f. 973.539.0916  
THE WOOLWORTH BUILDING  
233 BROADWAY SUITE 2150, NEW YORK, NY 10279  
t. 212.982.7900 f. 212.982.8111  
www.nkarchitects.com

ALLEN R. KOPELSON, AIA AI 05644  
BEN P. LEE, AIA AI 07017  
STEPHEN P. ALUOTTO, AIA AI 09269  
PAUL J. DRAGO, AIA AI 17503  
WALTER J. KNEIS, AIA AI 10867  
DANIEL J. TOPPING, AIA AI 16263

*Allen R. Kopelson*

THIS DOCUMENT IS THE EXCLUSIVE PROPERTY OF NADASKAY KOPELSON ARCHITECTS. THE DOCUMENT AND THE INFORMATION IT CONTAINS MAY NOT BE REPRODUCED OR USED FOR OTHER THAN THE SPECIFIC PROJECT FOR WHICH IT WAS PREPARED WITHOUT THE EXPLICIT CONSENT OF NADASKAY KOPELSON ARCHITECTS.

## PRELILMINARY & FINAL MAJOR SITE PLAN FOR ONE BAY URBAN RENEWAL LLC.

PROPOSED MEDICAL OFFICE BUILDING

BLOCK 4215, LOT1, TOWNSHIP OF MONTCLAIR AND  
BLOCK 106, LOT 15, BOROUGH OF GLEN RIDGE,  
ESSEX COUNTY, NEW JERSEY

2 PLANNING BOARD SUBMISSION 1-31-18  
1 HISTORICAL PRESERVATION COMMITTEE REVIEW 10-19-17

NO. DESCRIPTION DATE  
DRAWING TITLE  
**SOUTH & WEST ELEVATIONS - COLOR**

DATE  
SCALE  
1/8" = 1'-0"  
DRAWN  
MM/EB  
CHECKED  
AK  
DRAWING NUMBER

**A-3**

NOTE: DRAWINGS AT SCALE WHEN PRINTED AT 24" x 36"

NK PROJECT NUMBER: 2133.000





1 NORTH ELEVATION  
1/8" = 1'-0"



2 EAST ELEVATION  
1/8" = 1'-0"

ARCHITECTS



95 WASHINGTON STREET, MORRISTOWN, NJ 07960  
t. 973.539.5353 f. 973.539.0916  
THE WOOLWORTH BUILDING  
233 BROADWAY SUITE 2150, NEW YORK, NY 10279  
t. 212.982.7900 f. 212.982.8111  
www.nkarchitects.com

ALLEN R. KOPELSON, AIA AI 05644  
BEN P. LEE, AIA AI 07017  
STEPHEN P. ALIOTTO, AIA AI 09269  
PAUL J. DRAGO, AIA AI 17503  
WALTER J. KNEIS, AIA AI 10867  
DANIEL J. TOPPING, AIA AI 16263

*Allen R. Kopelson*

THIS DOCUMENT IS THE EXCLUSIVE PROPERTY OF NADASKAY KOPELSON ARCHITECTS. THE DOCUMENT AND THE INFORMATION IT CONTAINS MAY NOT BE REPRODUCED OR USED FOR OTHER THAN THE SPECIFIC PROJECT FOR WHICH IT WAS PREPARED WITHOUT THE EXPLICIT CONSENT OF NADASKAY KOPELSON ARCHITECTS.

## PRELILMINARY & FINAL MAJOR SITE PLAN FOR ONE BAY URBAN RENEWAL LLC.

PROPOSED MEDICAL OFFICE BUILDING

BLOCK 4215, LOT1, TOWNSHIP OF MONTCLAIR AND  
BLOCK 106, LOT 15, BOROUGH OF GLEN RIDGE,  
ESSEX COUNTY, NEW JERSEY

2 PLANNING BOARD SUBMISSION 1-31-18  
1 HISTORICAL PRESERVATION COMMITTEE REVIEW 10-19-17

DRAWING TITLE  
**NORTH & EAST ELEVATIONS - COLOR**

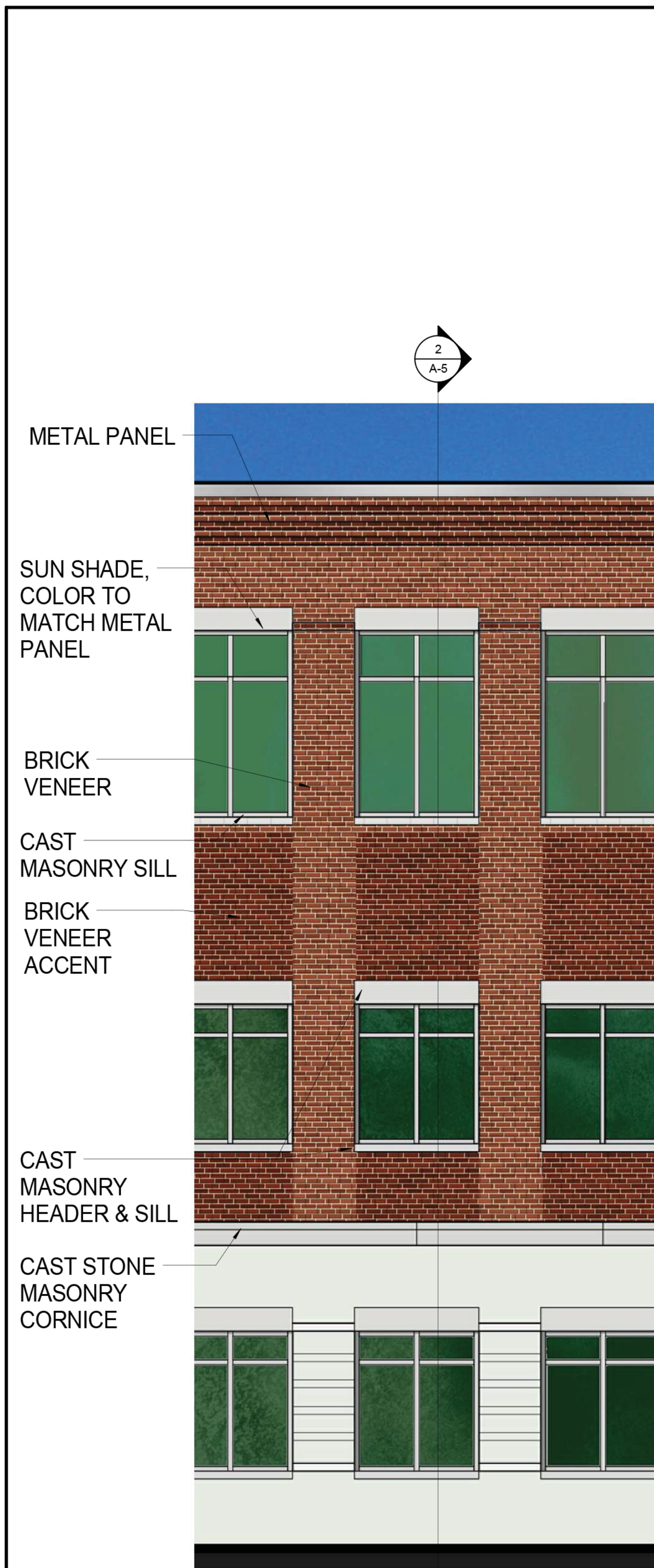
DATE  
SCALE  
1/8" = 1'-0"  
DRAWN  
MM/EB  
CHECKED  
AK  
DRAWING NUMBER

**A-4**

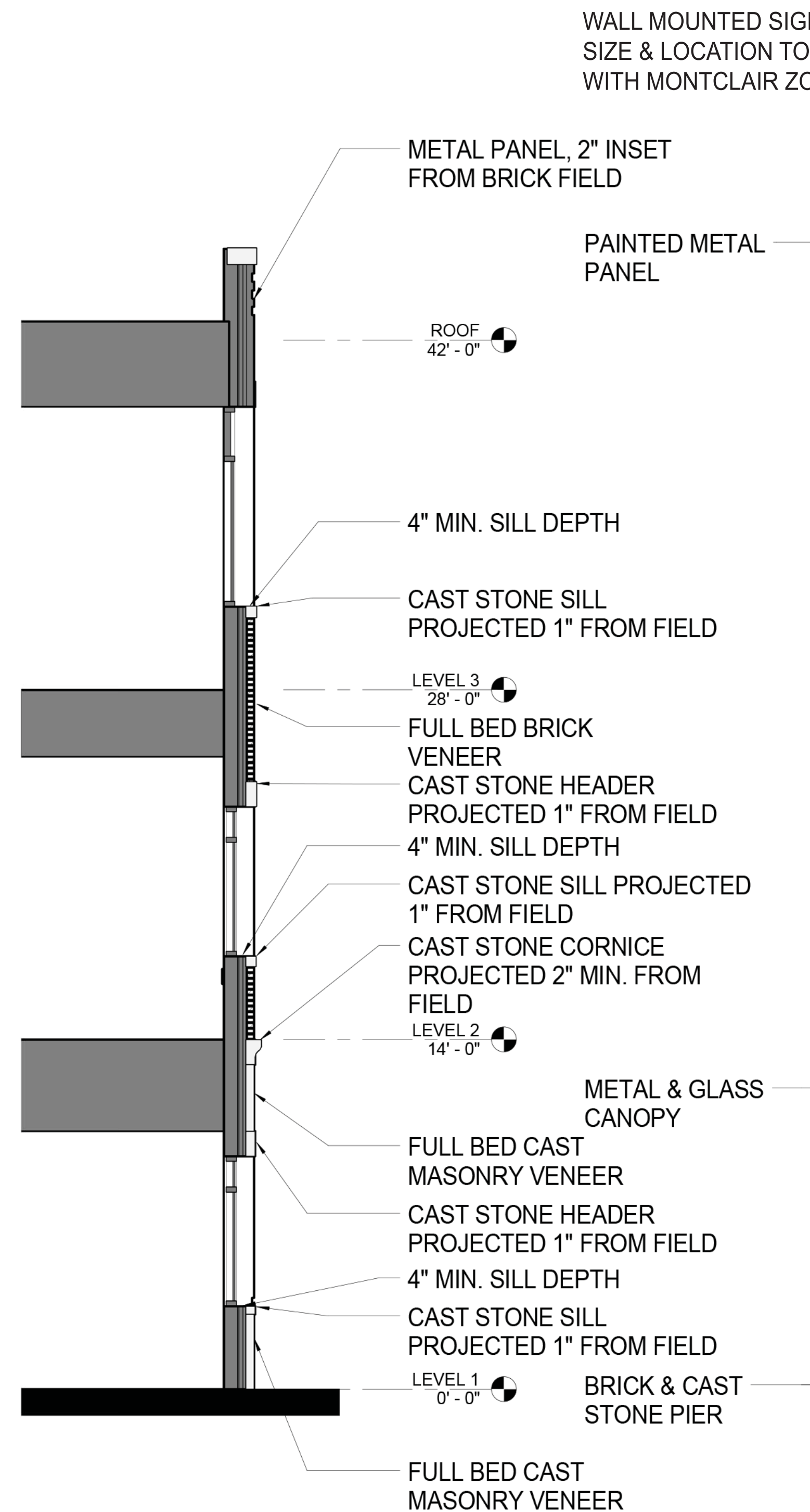
NOTE: DRAWINGS AT SCALE WHEN PRINTED AT 24" x 36"

NK PROJECT NUMBER: 2133.000





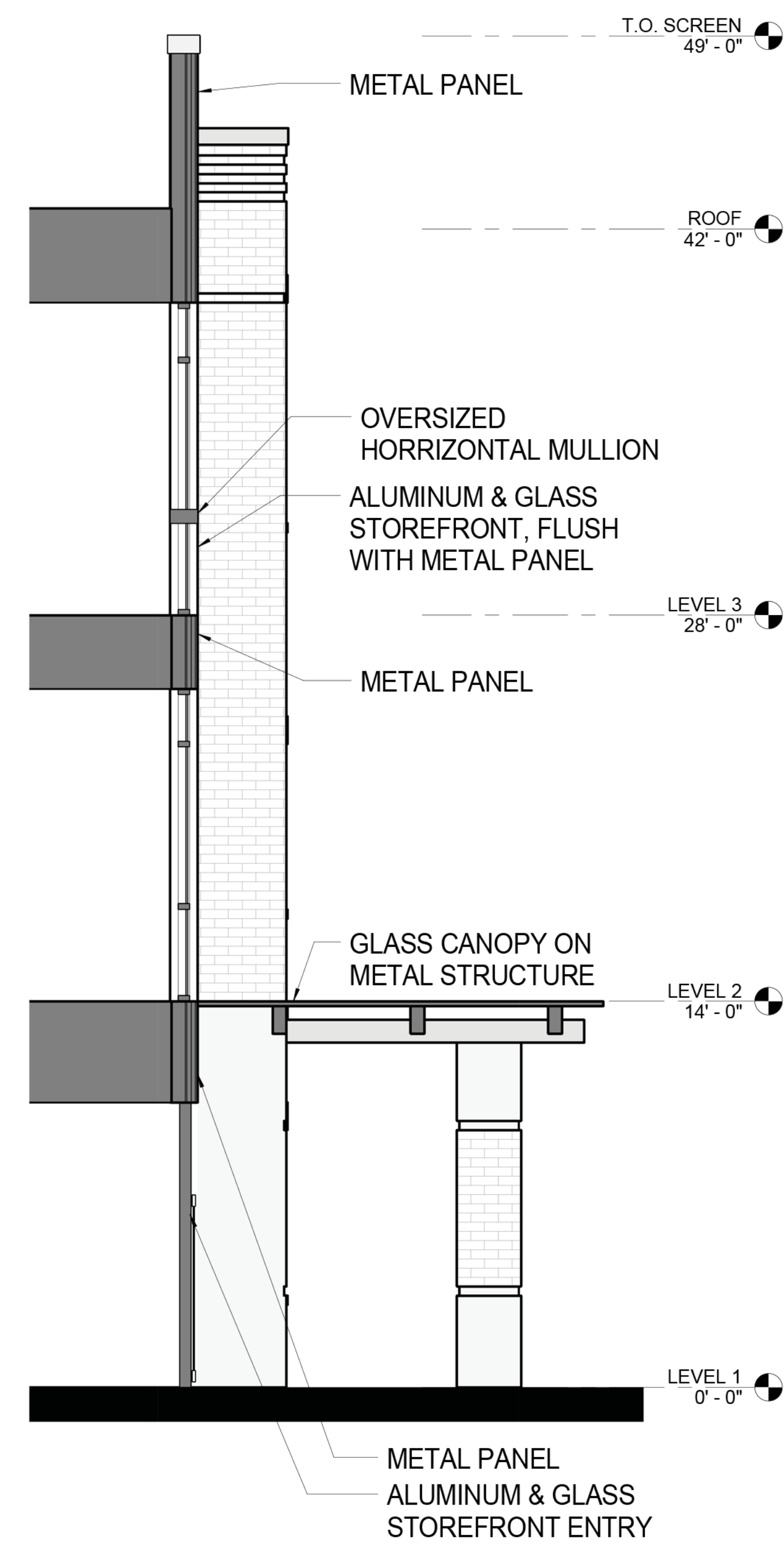
1 PARTIAL SOUTH ELEVATION  
1/4" = 1'-0"



2 EXTERIOR WALL SECTION  
1/4" = 1'-0"



3 PARTIAL SOUTH ELEVATION  
1/4" = 1'-0"



4 EXTERIOR WALL SECTION  
1/4" = 1'-0"

ARCHITECTS

NK

ARCHITECTURE

ENGINEERING

PLANNING

INTERIORS

95 WASHINGTON STREET, MORRISTOWN, NJ 07960

t. 973.539.5353 f. 973.539.0916

THE WOOLWORTH BUILDING

233 BROADWAY SUITE 2150, NEW YORK, NY 10279

t. 212.982.7900 f. 212.982.8111

www.nkarchitects.com

ALLEN R. KOPELSON, AIA

BEN P. LEE, AIA

STEPHEN P. ALUOTTO, AIA

PAUL J. DRAGO, AIA

WALTER J. KNEIS, AIA

DANIEL J. TOPPING, AIA

AI 05644

AI 07017

AI 09269

AI 17503

AI 10867

AI 16263

THIS DOCUMENT IS THE EXCLUSIVE PROPERTY OF NADASKAY KOPELSON ARCHITECTS. THE DOCUMENT AND THE INFORMATION IT CONTAINS MAY NOT BE REPRODUCED OR USED FOR OTHER THAN THE SPECIFIC PROJECT FOR WHICH IT WAS PREPARED WITHOUT THE EXPLICIT CONSENT OF NADASKAY KOPELSON ARCHITECTS.

PRELILMINARY & FINAL MAJOR SITE PLAN FOR ONE BAY URBAN RENEWAL LLC.

PROPOSED MEDICAL OFFICE BUILDING

BLOCK 4215, LOT1, TOWNSHIP OF MONTCLAIR AND BLOCK 106, LOT 15, BOROUGH OF GLEN RIDGE, ESSEX COUNTY, NEW JERSEY

2	PLANNING BOARD SUBMISSION	1-31-18
1	HISTORICAL PRESERVATION COMMITTEE REVIEW	10-19-17
NO.	DESCRIPTION	DATE
DRAWING TITLE		
CONSTRUCTION DETAILS		

DATE

SCALE

1/4" = 1'-0"

DRAWN

MM

CHECKED

AK

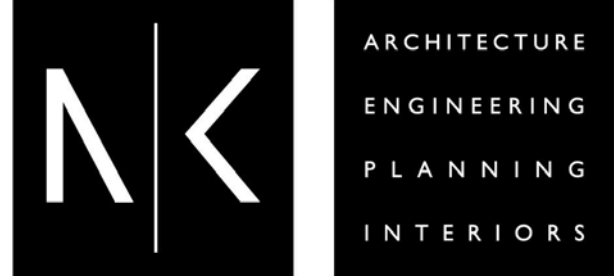
DRAWING NUMBER

A-5

NOTE: DRAWINGS AT SCALE WHEN PRINTED AT 24" x 36"

NK PROJECT NUMBER: 2133.000





95 WASHINGTON STREET, MORRISTOWN, NJ 07960  
t. 973.539.5353 f. 973.539.0916  
THE WOOLWORTH BUILDING  
233 BROADWAY SUITE 2150, NEW YORK, NY 10279  
t. 212.982.7900 f. 212.982.8111  
www.nkarchitects.com

ALLEN R. KOPELSON, AIA	AI 05644
BEN P. LEE, AIA	AI 07017
STEPHEN P. ALLIOTTO, AIA	AI 09269
PAUL J. DRAGO, AIA	AI 17503
WALTER J. KNEIS, AIA	AI 10867
DANIEL J. TOPPING, AIA	AI 16263

*Allen R. Kopelson*  
THIS DOCUMENT IS THE EXCLUSIVE PROPERTY OF NADASKAY KOPELSON ARCHITECTS. THE DOCUMENT AND THE INFORMATION IT CONTAINS MAY NOT BE REPRODUCED OR USED FOR OTHER THAN THE SPECIFIC PROJECT FOR WHICH IT WAS PREPARED WITHOUT THE EXPLICIT CONSENT OF NADASKAY KOPELSON ARCHITECTS.

**PRELILMINARY &  
FINAL MAJOR SITE  
PLAN FOR ONE  
BAY URBAN  
RENEWAL LLC.**

PROPOSED MEDICAL OFFICE  
BUILDING

BLOCK 4215, LOT1, TOWNSHIP OF MONTCLAIR  
AND  
BLOCK 106, LOT 15, BOROUGH OF GLEN RIDGE,  
ESSEX COUNTY, NEW JERSEY

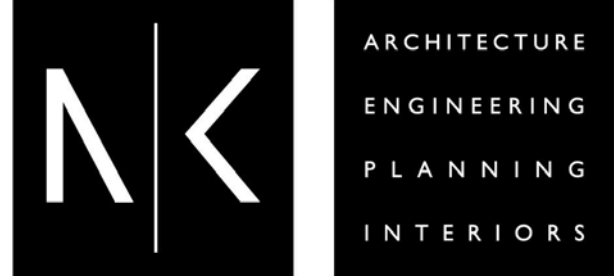
2	PLANNING BOARD SUBMISSION	1-31-18
1	HISTORICAL PRESERVATION COMMITTEE REVIEW	10-19-17

DRAWING TITLE  
**EXTERIOR RENDERING -  
SOUTHWEST VIEW**

DATE  
-  
SCALE  
  
DRAWN  
EB  
CHECKED  
RR  
DRAWING NUMBER

**A-6**





95 WASHINGTON STREET, MORRISTOWN, NJ 07960  
t. 973.539.5353 f. 973.539.0916  
THE WOOLWORTH BUILDING  
233 BROADWAY SUITE 2150, NEW YORK, NY 10279  
t. 212.982.7900 f. 212.982.8111  
www.nkarchitects.com

ALLEN R. KOPELSON, AIA	AI 05644
BEN P. LEE, AIA	AI 07017
STEPHEN P. ALLIOTTO, AIA	AI 09269
PAUL J. DRAGO, AIA	AI 17503
WALTER J. KNEIS, AIA	AI 10867
DANIEL J. TOPPING, AIA	AI 16263

*Allen Kopelson*  
THIS DOCUMENT IS THE EXCLUSIVE PROPERTY OF NADASKAY KOPELSON ARCHITECTS. THE DOCUMENT AND THE INFORMATION IT CONTAINS MAY NOT BE REPRODUCED OR USED FOR OTHER THAN THE SPECIFIC PROJECT FOR WHICH IT WAS PREPARED WITHOUT THE EXPLICIT CONSENT OF NADASKAY KOPELSON ARCHITECTS.

**PRELILMINARY &  
FINAL MAJOR SITE  
PLAN FOR ONE  
BAY URBAN  
RENEWAL LLC.**

PROPOSED MEDICAL OFFICE  
BUILDING  
  
BLOCK 4215, LOT1, TOWNSHIP OF MONTCLAIR  
AND  
BLOCK 106, LOT 15, BOROUGH OF GLEN RIDGE,  
ESSEX COUNTY, NEW JERSEY

2	PLANNING BOARD SUBMISSION	1-31-18
1	HISTORICAL PRESERVATION COMMITTEE REVIEW	10-19-17

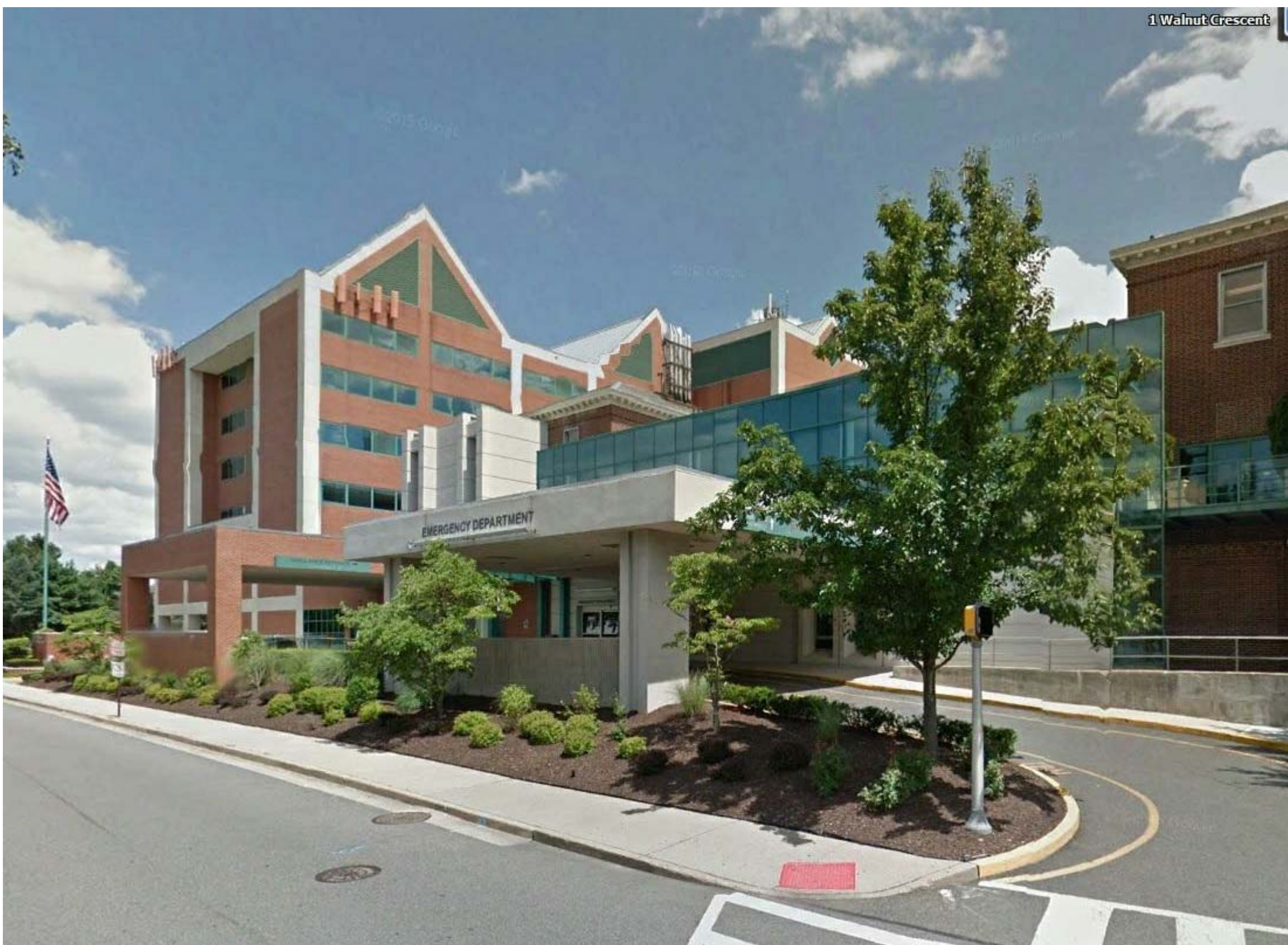
DRAWING TITLE  
**EXTERIOR RENDERING -  
SOUTHEAST VIEW**

DATE  
-  
SCALE  
  
DRAWN  
**EB**  
CHECKED  
**RR**  
DRAWING NUMBER





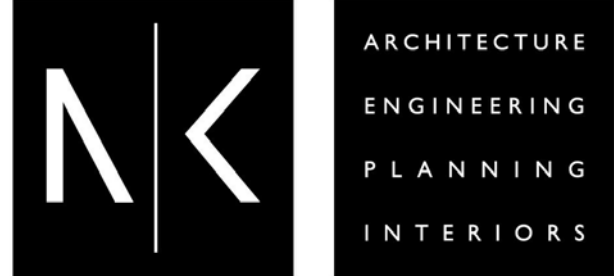
BAY STREET - WEST



WALLNUT CRESCENT



BAY STREET



95 WASHINGTON STREET, MORRISTOWN, NJ 07960  
t. 973.539.5353 f. 973.539.0916  
THE WOOLWORTH BUILDING  
233 BROADWAY SUITE 2150, NEW YORK, NY 10279  
t. 212.982.7900 f. 212.982.8111  
www.nkarchitects.com

ALLEN R. KOPELSON, AIA AI 05644  
BEN P. LEE, AIA AI 07017  
STEPHEN P. ALIOTTO, AIA AI 09269  
PAUL J. DRAGO, AIA AI 17503  
WALTER J. KNEIS, AIA AI 10867  
DANIEL J. TOPPING, AIA AI 16263

THIS DOCUMENT IS THE EXCLUSIVE PROPERTY OF  
NADASKAY KOPELSON ARCHITECTS. THE DOCUMENT AND  
THE INFORMATION IT CONTAINS MAY NOT BE REPRODUCED  
OR USED FOR OTHER THAN THE SPECIFIC PROJECT FOR  
WHICH IT WAS PREPARED WITHOUT THE EXPLICIT CONSENT  
OF NADASKAY KOPELSON ARCHITECTS.

**PRELILMINARY &  
FINAL MAJOR SITE  
PLAN FOR ONE  
BAY URBAN  
RENEWAL LLC.**

PROPOSED MEDICAL OFFICE  
BUILDING

BLOCK 4215, LOT1, TOWNSHIP OF MONTCLAIR  
AND  
BLOCK 106, LOT 15, BOROUGH OF GLEN RIDGE,  
ESSEX COUNTY, NEW JERSEY

2	PLANNING BOARD SUBMISSION	1-31-18
1	HISTORICAL PRESERVATION COMMITTEE REVIEW	10-19-17

DRAWING TITLE  
**EXISTING ADJACENT  
HOSPITAL**

DATE  
-  
SCALE  
DRAWN  
CA/MM  
CHECKED  
AK  
DRAWING NUMBER